



KRUUSE Thoracic Trocar Drainage Procedure Kit

Are you prepared for dogs with pleural space disease?

Whether in case of pleural effusion or pneumothorax, KRUUSE thoracic catheter with trocar offers you quick access to the pleural space.

- The trocar has a sharp cutting edge for easy introduction
- The catheter has two atraumatic side holes for drainage
- Radiopaque line in the catheter ensures X-ray detection

Thoracic Drainage

This sterile set gives access to immediate drainage of the thoracic cavity and it is simple and safe to use.

Each set consists of:

- Trocar and catheter (designed specifically for the chest cavity)
- Special design adapter with luer lock connector
- Three-way stop-cock with luer lock connector
- 30 ml luer lock syringe
- Clamp (scissor-shaped)
- Nylon suture

Leave the catheter in the required position and pull out 2/3 of the trocar, use clamp to shut off access, cut the catheter to the required length and apply the adapter. Connect the three-way stop-cock (luer lock), connect to syringe and drainage can be activated.

Emergency Thoracic Drainage Procedure

1. Place dog in lateral recumbency and prepare chest area from last rib to front leg



2. Incise the skin at the highest point of the thorax at intercostal spaces 9 – 10



3. Tunnel the trocar & catheter subcutaneously 2-3 rib spaces cranially



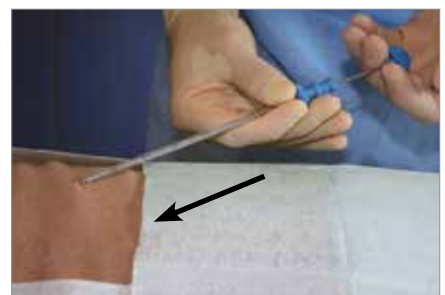
4. Then angle the trocar and catheter at 90° to the chest wall while grasping the catheter 2-4 cm from its distal tip to prevent the sharp tip of the trocar from penetrating the chest cavity too far



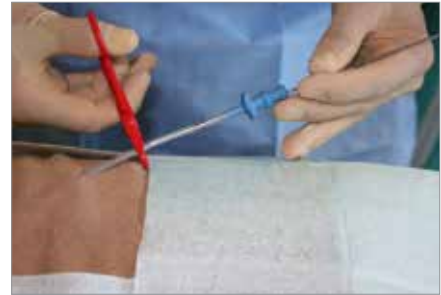
5. While placing the handle of the trocar in the palm of the free hand, now gently push the trocar & catheter through the rib space into the thoracic cavity



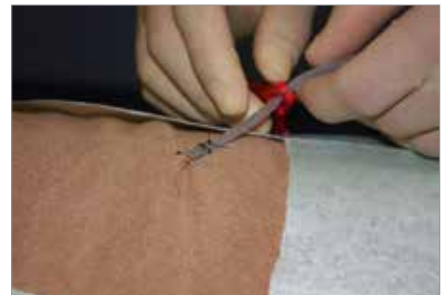
6. Once the tip of the trocar is introduced into the thoracic cavity the angle of the trocar & catheter is changed, pointing it cranio-ventrally. The catheter is then slid off the trocar, pushing it further into the thoracic cavity, still in the cranio-ventral direction



7. Before the complete removal of the trocar, clamp off the catheter by using the scissor clamp



8. A “purse-string” suture and a “Chinese finger trap” suture will keep the tube firmly in position



9. Cut the catheter to the desired length and fit the luer adapter



10. Connect 3-way stop-cock to luer adapter and fit syringe to 3-way stop-cock



11. Drainage position



12. Position for emptying



KRUUSE Thoracic Catheter with Trocar

Catheter is provided with trocar for easy penetration, placement and handling

- Markings provided from the distal tip to help ascertain depth of placement
- Two lateral eyes for efficient drainage
- Proximal end fitted with tapered connector for easy connection to the drainage bottle
- Radiopaque line for X-ray detection
- Sterilised by ethylene oxide

KRUUSE thoracic catheter with trocar 10 FG, sterile, 1/pk

KRUUSE cat. No 230643

KRUUSE thoracic catheter with trocar 12 FG, sterile, 1/pk

KRUUSE cat. No 230642

KRUUSE thoracic catheter with trocar 16 FG, sterile, 1/pk

KRUUSE cat. No 230644

KRUUSE thoracic catheter with trocar 20 FG, sterile, 1/pk

KRUUSE cat. No 230645



KRUUSE Thoracic Trocar Drainage Procedure Kit

Each set consists of:

- Trocar and catheter (designed specifically for the chest cavity)
- Special design adapter with luer lock connector
- Three-way stopcock with luer lock connector
- 30ml luer lock syringe
- Clamp (scissor-shaped)
- Nylon suture

KRUUSE thoracic trocar drainage procedure Kit, 10 FG, sterile, 1/pk

KRUUSE cat. No 230660

KRUUSE thoracic trocar drainage procedure kit, 12 FG, sterile, 1/pk

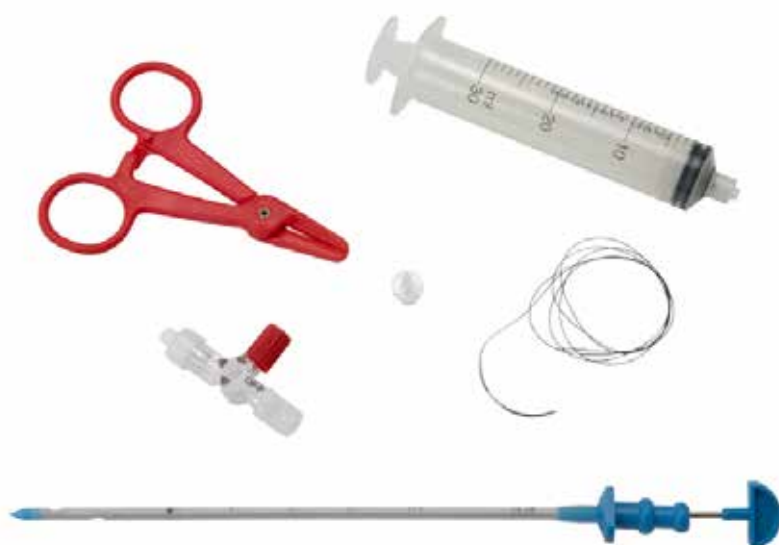
KRUUSE cat. No 230661

KRUUSE thoracic trocar drainage procedure kit, 16 FG, sterile, 1/pk

KRUUSE cat. No 230662

KRUUSE thoracic trocar drainage procedure kit, 20 FG, sterile, 1/pk

KRUUSE cat. No 230663



KRUUSE